

Moving and Restoration of Cornland School

The Cornland School Foundation in cooperation with the City of Chesapeake's Parks, Recreation and Tourism Department are working to restore the historic Cornland School to a Museum that will be opened for the public. The Cornland School Museum will become one of the centerpieces of the Historical Village which will be located on Glencoe Street in Southern Chesapeake.

We are seeking your support to help us tell the full story of the challenges faced by African Americans in getting an education in the area which is now Chesapeake. The Foundation depends on individual, governmental bodies, foundations, corporate, and community organizations support to achieve its mission. Your fully tax deductibles gifts and sponsorships will help further the mission of fully restoring Cornland School to a living museum and telling the story of Cornland School contribution to educating African American from 1902 to 1950. The Board of Directors and members offer our sincere thanks to our loyal members and donors as we are transforming Cornland School into a living educational museum for everyone to experience.

The Cornland Schoolhouse Restoration Sponsorship Opportunities are listed below and we are hopeful that you will help us bring history to life. Also listed below the other sites that will be in the historic Village which includes:

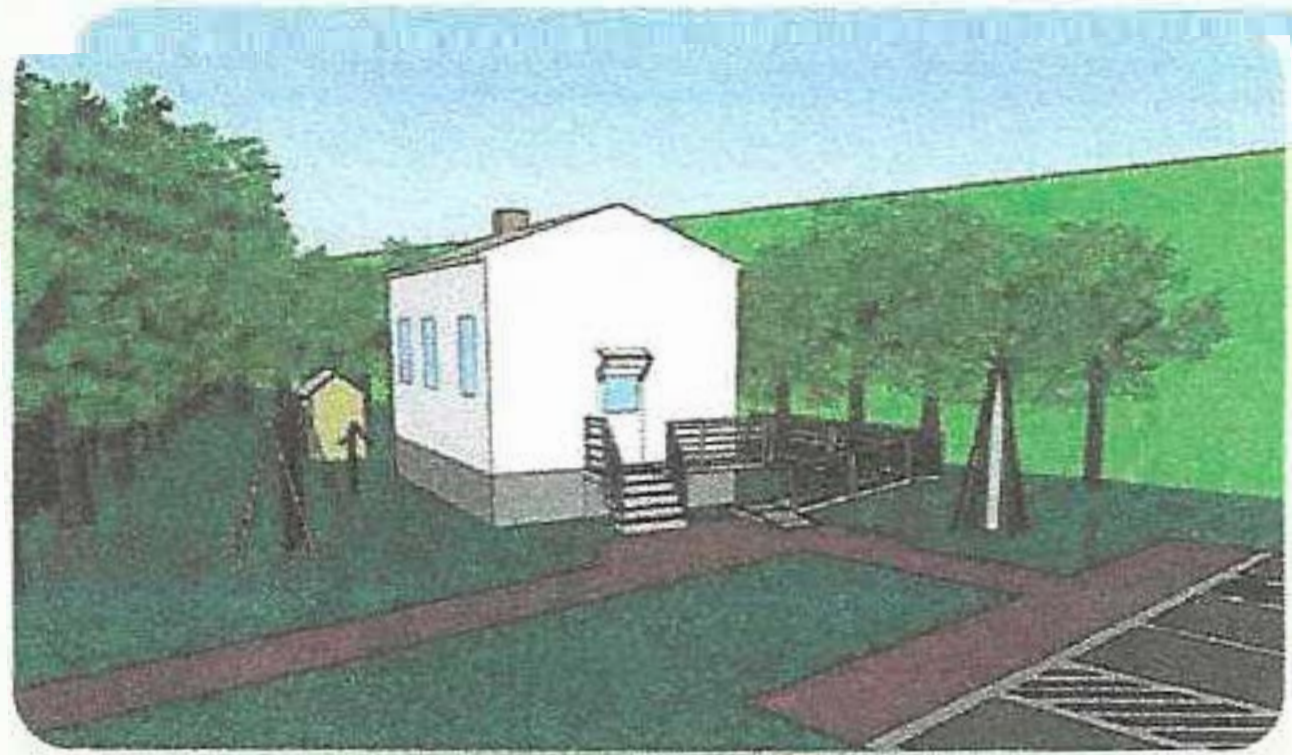
- Cornland School Museum
- Chesapeake Visitors Center
- Dismal Swamp Maroon Communities Exhibit

Outdoor Classroom

- Steamboat Replica
- Underground Railroad Exhibit
- Trade and Commerce on the Canal Exhibit
- Canal Superintendent's House

Cornland Schoolhouse Restoration

Where History Comes To Life



Sponsorship Opportunities

*enhance the experience
with your contribution*

PRIMARY

\$ 1,000.00

Window of Reproduction Glass
Dedicated Bench
May Pole Replica
25 Native Tree Saplings

SECONDARY

\$ 5,000.00

Interpretive Panel
Brick Walkway
Wood Shed Replica
500 Promotional Brochures

SCHOLAR

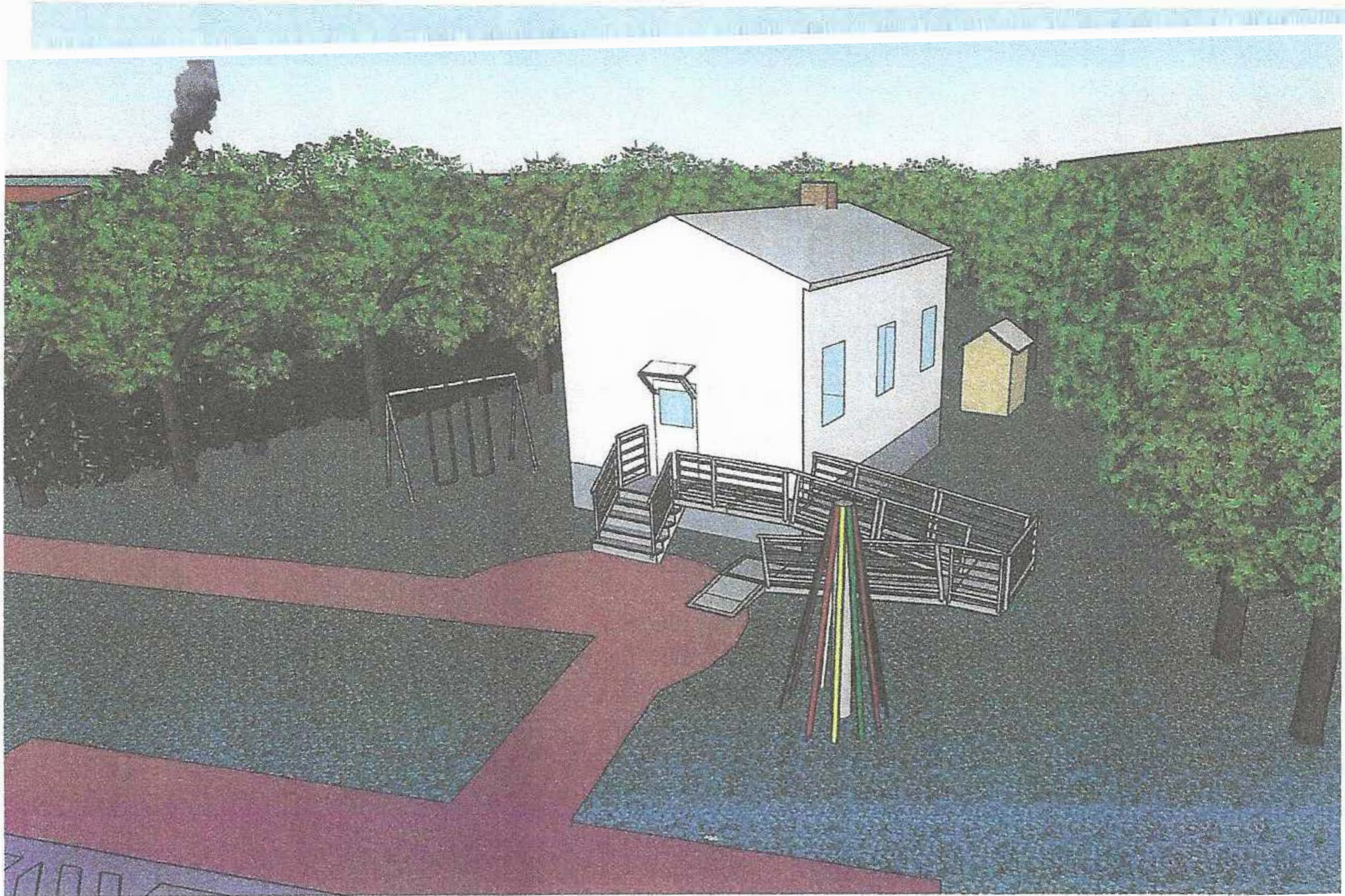
\$ 10,000.00

Large Display Case with Environmental Controls
Outhouse Replica

DOCTORATE

\$ 25,000.00

Interactive Exhibit Station
Permanent Accessibility Ramp



Graphic presentation of Cornland School Museum